

RECEIVED

JUN 05 2001

TECH CENTER 1600/2900

BEST AVAILABLE COPY ATTORNEY DOCKET NO: Q61014
PATENT APPLICATION



IN THE UNITED STATES PATENT AND TRADEMARK OFFICE

2#11

In re application of:

Yoji IKAWA, et al.

Appln. No.: 09/670,568

Group Art Unit: 1642

Confirmation No.: Not Yet Assigned

Examiner: N. Davis

Filed: September 27, 2000

For: HUMAN p51 GENES AND GENE PRODUCTS THEREOF

SUBMISSION OF FORMAL DRAWINGS

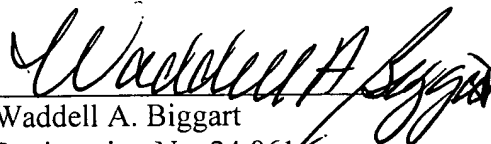
Commissioner for Patents
Washington, D.C. 20231

Sir:

Submitted herewith please find 15 sheets, (Figures 1-15) of formal drawings. The

Examiner is respectfully requested to acknowledge receipt of these formal drawings.

Respectfully submitted,


Waddell A. Biggart
Registration No. 24,861

SUGHRUE, MION, ZINN,
MACPEAK & SEAS, PLLC
2100 Pennsylvania Avenue, N.W.
Washington, D.C. 20037-3213
Telephone: (202) 293-7060
Facsimile: (202) 293-7860

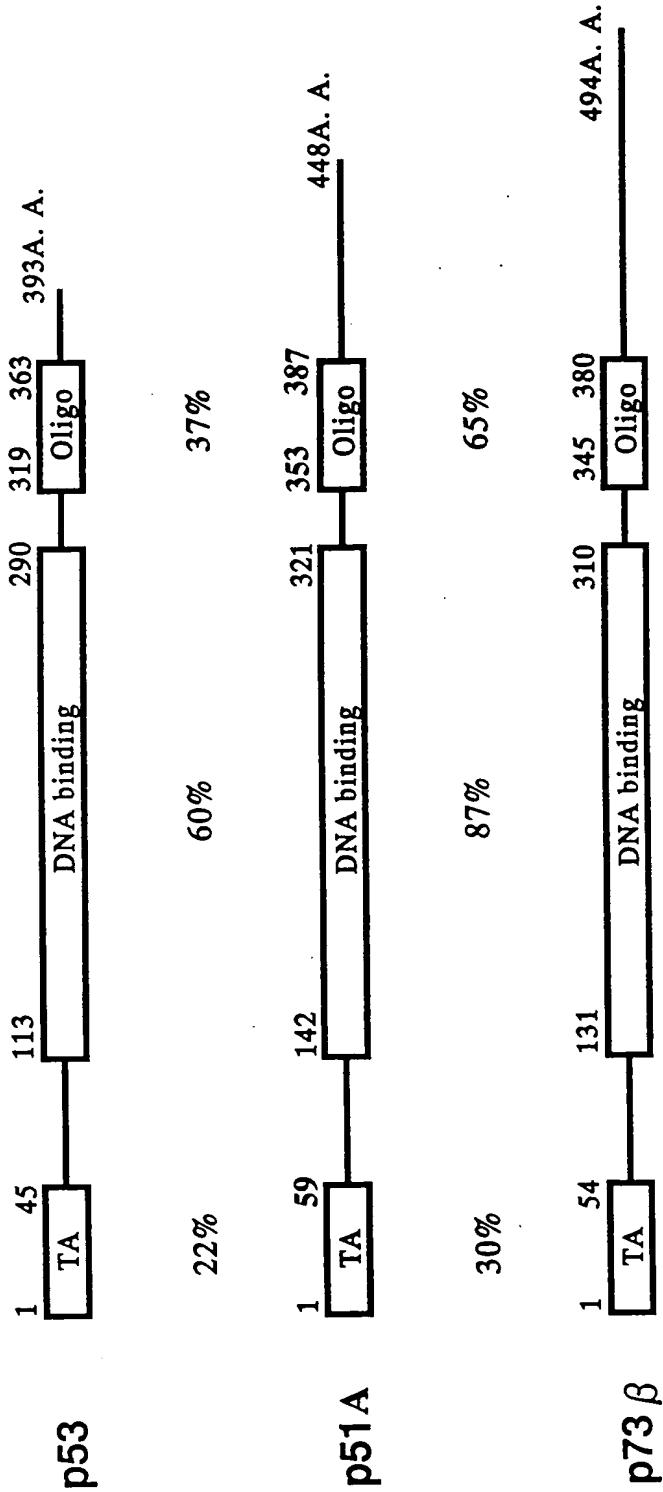
Date: May 11, 2001

APPROVED	O.G. FIG. 1	
BY	CLASS	SUBCLASS
DRAFTSMAN		

JOJI IKAWA, et al.
 HUMAN p51 GENES AND GENE
 PRODUCTS THEREOF
 September 27, 2000
 Q61014
 202-293-7060

SN: 09/670,568
 Sheet 1 of 15

FIG. 1



APPROVED	O.G. FIG.	
BY	CLASS	SUBCLASS
DRAFTSMAN		

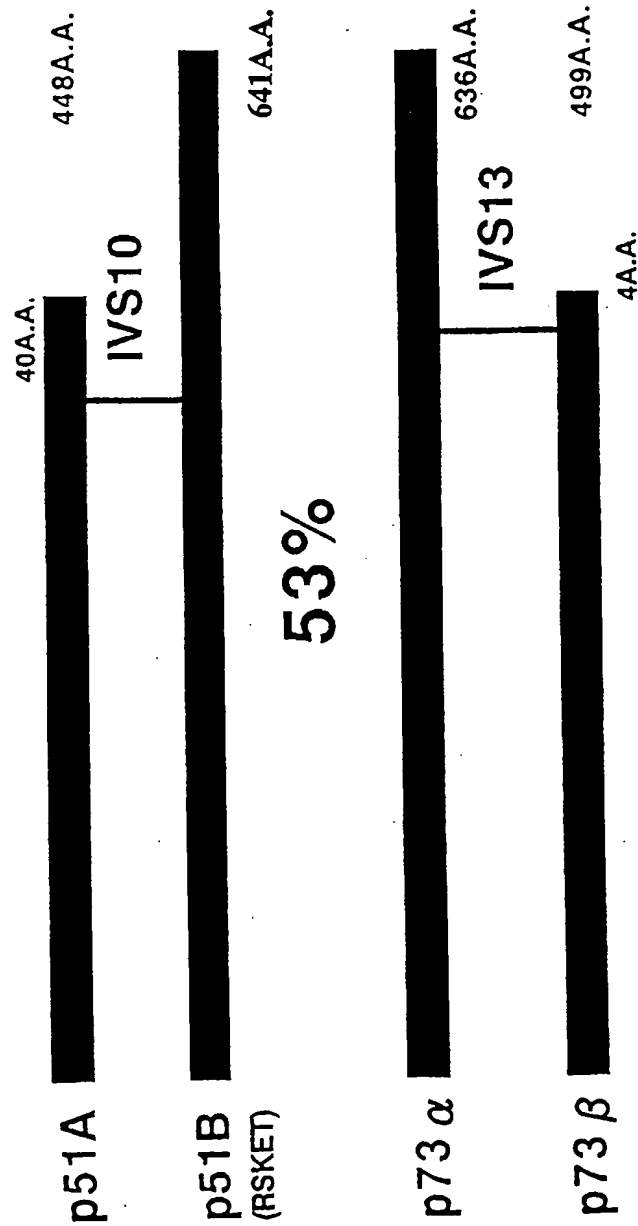
AN p51 GENE AND GENE
PRODUCTS THEREOF
September 27, 2000
Q61014
202-293-7060

SN: 09/670,568
Sheet 2 of 15

FIG. 2

p51A	MSQSTQTNEF	LSPEVFQHIW	DLLEQPICSV	QPIQLNFVDE	PSDEGATNKI	50
p73B	MAQSTATSP-	DGGTTFEHLW	SSLE-POSTY	--FQLP-QSS	RCNNEVVGTT	45
p53	KEEPQSDPS-	VEPPLSQETF	SQI-----	--WHL-----L	PENNVLSPLP	36
Consensus	M.QST.T...	..P..FQH.W	SLE-P....	---DL-----	P.NN.....	50
p51A	EISMDCIRMQ	DSOLSDPMMP	QYTNLGLLS	MDQQIQNGSS	STSPYNTDHA	100
p73B	DSSMDVFHLE	--GMTTSVMA	QF---NLLSS	TMDQSSRAA	SASFYTPPEHA	90
p53	SQAMDLMLS	----PODI-E	QW----FTED	PGPDEAPRMP	EAAAF-RVARA	76
Consensus	..SMD...L.	-----D....	Q.---.LL.S	...Q...R..	SASBY...HA	100
p51A	QNSVTAPSPY	ACPSSTFDAL	SPSPAIPSNL	DYHOPHSFDV	SFOQSSSTAKS	150
p73B	-ASVPTHSPY	ACPSSTFDTH	SPAPVIPSNT	DYHOPHFEV	TFOQSSSTAKS	139
p53	-PAAPTAA-	PAPAPSW-PL	SSS--VPSQK	TYQSYQFRL	QFLHSSTAKS	121
Consensus	..SVPTSPY	ACPSSTFD.L	SPSP.IPSNT	DYHOPH.E.V	IFQSSSTAKS	150
p51A	ATHTYSTELK	KLYCQIAKTC	FIQINVTTP	PDQAVIRAMP	VYKKAENHTE	200
p73B	ATHTYSPULK	KLYCQIAKTC	FIQINVTTP	PDQTAIRAMP	VYKKAENHTE	189
p53	VHTYSPALN	KMFQIAKTC	FIQINVDSTP	PDQTRVRANA	VYKQSOHATE	171
Consensus	ATHTYSP.LK	KLYCQIAKTC	FIQIN.V.TRP	PDQ.T.IRAMP	VYKKAENHTE	200
p51A	VVNRCPNHEL	SREFNEQQA	FPSHLIRVEG	NSHAGVVECP	ITDQSSVAVR	250
p73B	VVNRCPNHEL	GRDFNEQQA	FASHLIRVEG	NNLSQVVECP	ITDQSSVAVR	239
p53	VVNRCPNHEL	CSD-SQC-LA	FPCHLIRVEG	NLRVEYLQCR	NTERFSVAVR	219
Consensus	VVNRCPNHEL	.RDFNEQQA	FPSHLIRVEG	N...QVVECP	ITDQSSVAVR	250
p51A	YEPFQVQTEF	TTIUYNMCHN	SSQGGQNR	PIIITITLE	RQQLGPRC	300
p73B	YEPFQVQTEF	TTIUYNMCHN	SSQGGQNR	PIIITITLE	RQQLGPRS	289
p53	YEPFQVQSDC	TTIUYNMCHN	SSQGGQNR	PIIITITLE	SSQNLGPRNS	269
Consensus	YEPFQVQTEF	TTIUYNMCHN	SSQGGQNR	PIIITITLE	RQQLGPRS	300
p51A	FEARICACPG	RDRKAEDESI	RKQVSD--S	TKNGDGKRP	FRQNTGHI-Q	347
p73B	FEARICACPG	RDRKAEDEHY	REQQALNESS	AKNGAASKRA	FKQSPPAVPA	339
p53	FEARICACPG	RDRTEENL	RKKGEPH--H	ELPPGSTKRA	LPNMTSS---	314
Consensus	FEARICACPG	RDRKAEDE...	RKQQ.....S	.KNG..TKRA	F.QNT.....	350
p51A	M-TSINKRRS	PDDELLYLPV	RGRETYEMLL	KINLESLELMQ	YLPQHTIETY	396
p73B	LGAGVKKRRH	QEDTYLQV	RGRNREILM	KLHESLELME	LVPQPLVDSY	389
p53	--SPQPKKP	LDGEYFTLQI	RGRREEMFR	ELHBALELKD	AQAGKEPGGS	362
ConsensusKRR.	LD.E...YLV	RGR.EEML.	KLHESLELM.	..PQ.....Y	400
p51A	RQQQQQHQ-	HL-----	---LQ-H-	-LLSACFRNE	LV-EPRRE--	427
p73B	RQQQQLQRP	SHLQPPSYGP	VLSPMNVHG	GANKLPSVNO	LVGQPPPHSS	439
p53	RAHSS-----	HL-----	-----K-	-----SKKGQ	---STSRH--	380
Consensus	RQQQQ.....	HL-----	---LQ-H-	-----NQ	LV-.P.RH--	450
p51A	--TPKQSDV-	--FFR---HS	KPPN-----	-----	-----RSVYP-	448
p73B	AATPNLGPVG	PCMLNHHGA	VPANGEMSSS	HSAQSMVSGS	HCTPPPPHYA	489
p53	---KKL----	---MFK---T	EGPD-----	-----	-----SD---	393
Consensus	--TPKL..V-	---MF---H.	.PPN-----	-----	-----S.Y.-	500
p51A	-----	-----	-----	-----	-----	448
p73B	DPSLVRTWGP	-----	-----	-----	-----	499
p53	-----	-----	-----	-----	-----	393
Consensus	-----	-----	-----	-----	-----	510

FIG. 4

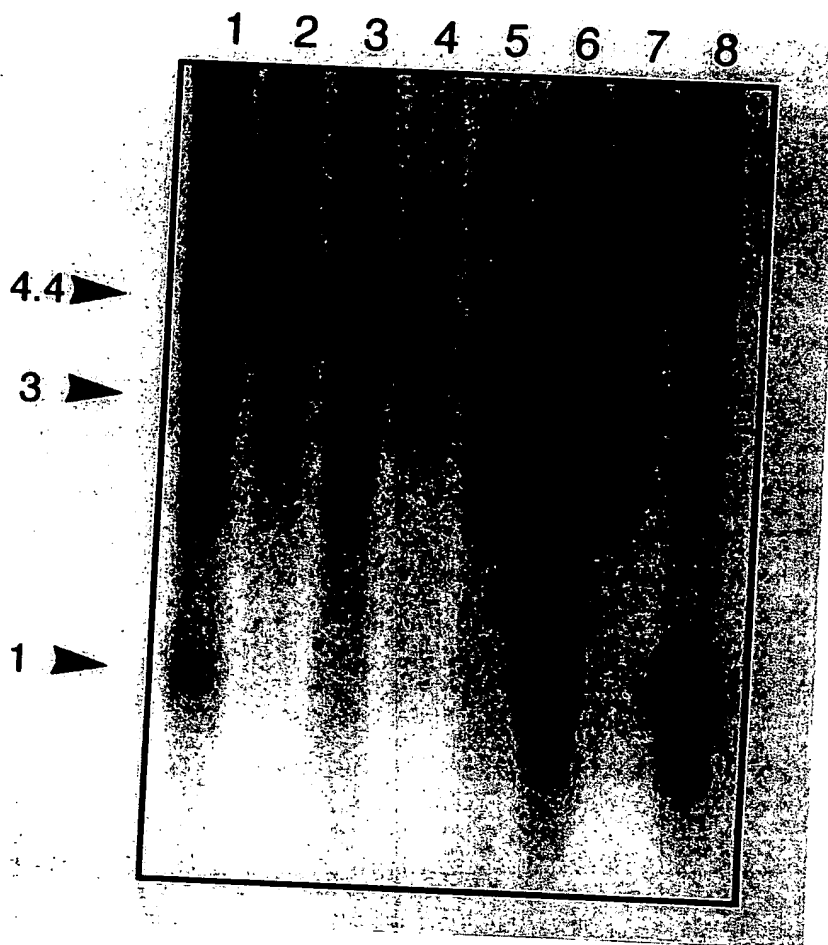


APPROVED	O.G. FIG.	
BY	CLASS	SUBCLASS
DRAFTSMAN		

Yoji IKAWA, et al.
 HUMAN p51 GENES AND GENE
 PRODUCTS THEREOF
 September 27, 2000
 Q61014
 202-293-7060

SN: 09/670,568
 Sheet 5 of 15

FIG. 5

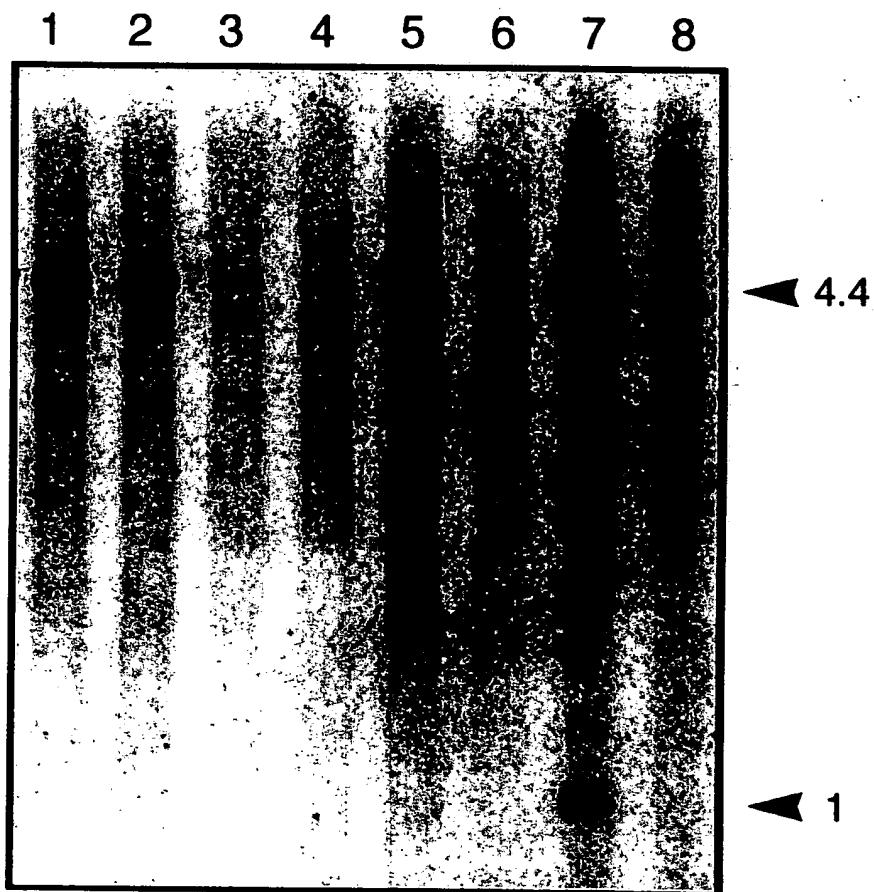


APPROVED	O.G. FIG.	
BY	CLASS	SUBCLASS
DRAFTSMAN		

Yoji IKAWA, et al.
 MAN p51 GENES AND GENE
 PRODUCTS THEREOF
 September 27, 2000
 Q61014
 202-293-7060

SN: 09/670,568
 Sheet 6 of 15

FIG. 6

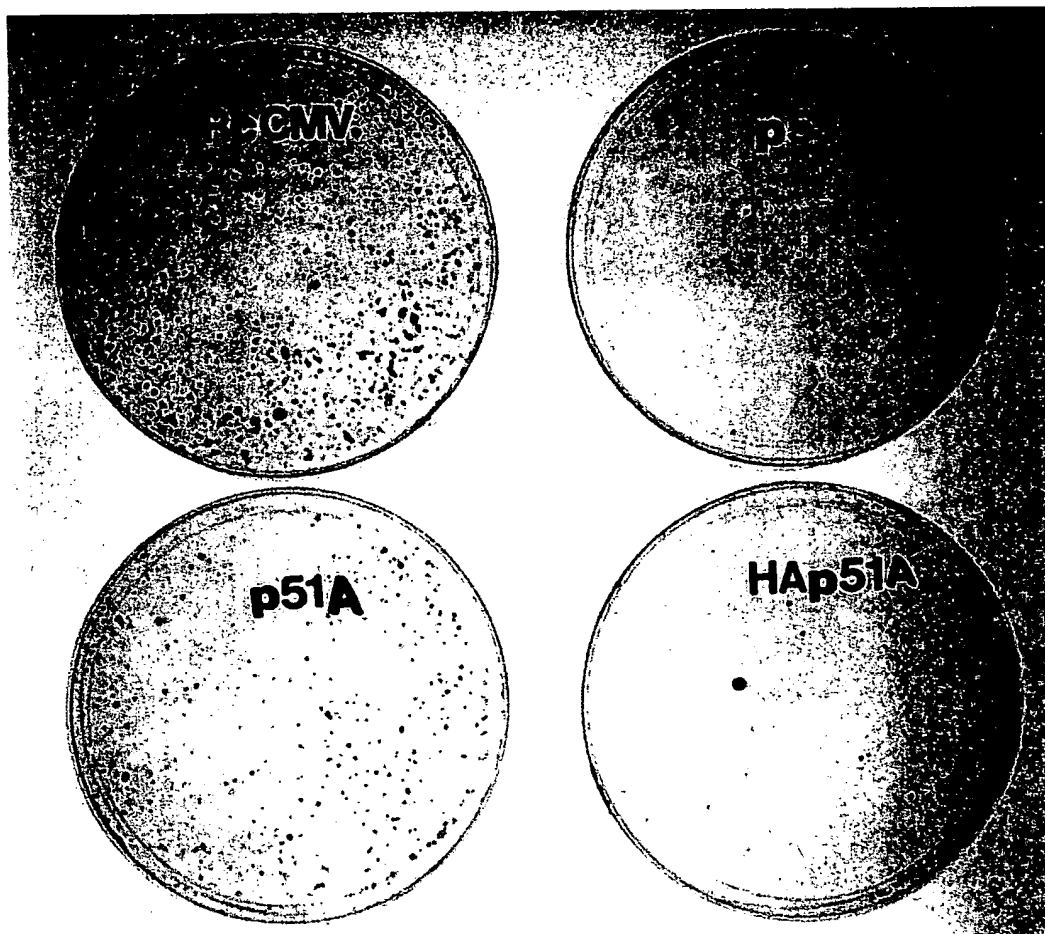


APPROVED	O.G. FIG.	
BY	CLASS	SUBCLASS
DRAFTSMAN		

Y. KAWA, et al.
 AN p51 GENES AND GENE
 PRODUCTS THEREOF
 September 27, 2000
 Q61014
 202-293-7060

SN: 09/670,568
 Sheet 7 of 15

FIG. 7



APPROVED	Q.G. FIG.	
BY	CLASS	SUBCLASS
DRAFTSMAN		

ICHIKAWA, et al.
 HUMAN p51 GENES AND GENE
 PRODUCTS THEREOF
 September 27, 2000
 Q61014
 202-293-7060

SN: 09/670,568
 Sheet 8 of 15

FIG. 8

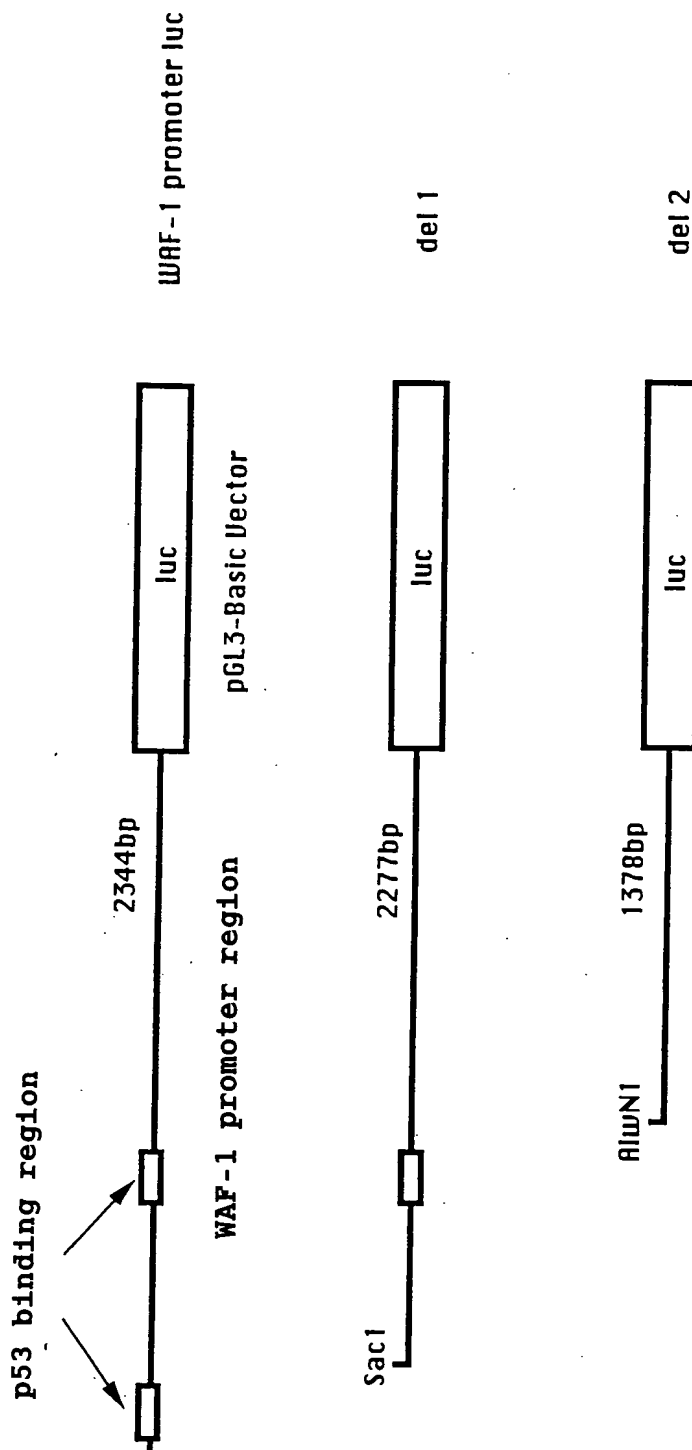
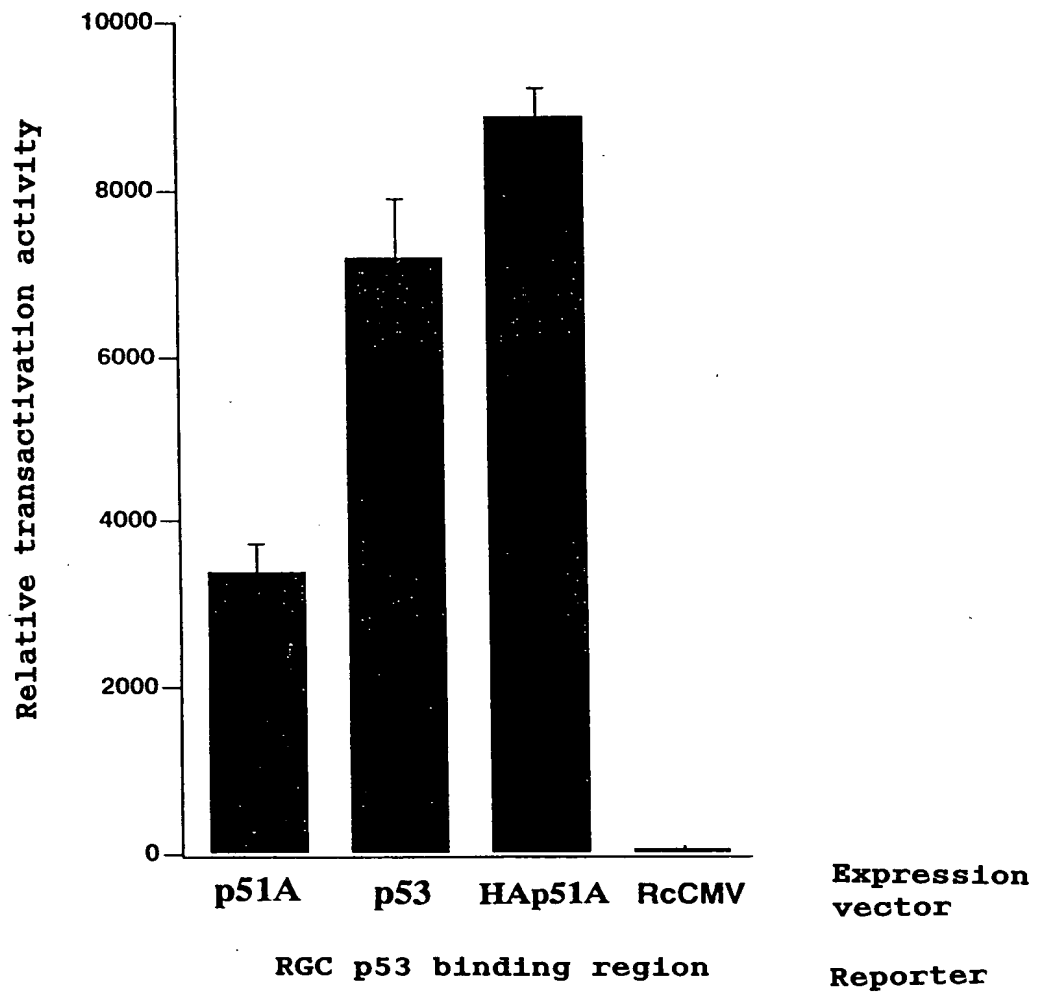


FIG. 9



APPROVED	O.G. FIG.	
BY	CLASS	SUBCLASS
DRAFTSMAN		

FIG. 10

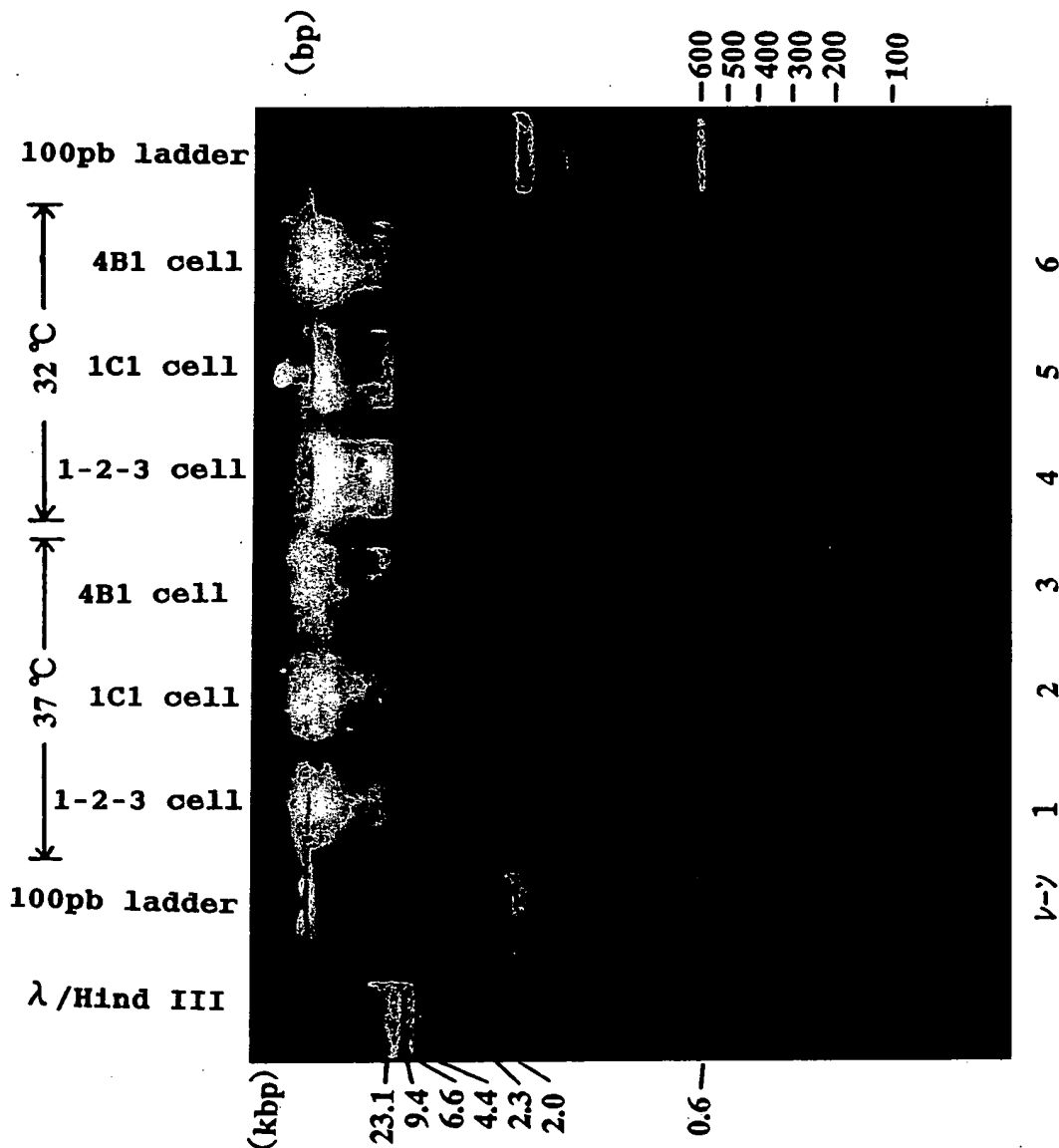


APPROVED	O.G. FIG.	
BY	CLASS	SUBCLASS
DRAFTSMAN		

MAN p51 GENES AND GENE
PRODUCTS THEREOF
September 27, 2000
Q61014
202-293-7060

SN: 09/670,568
Sheet 11 of 15

FIG. 11



APPROVED	O.G. FIG.	
BY	CLASS	SUBCLASS
DRAFTSMAN		

Yoshi KAWA, et al.
 HUMAN p51 GENES AND GENE
 PRODUCTS THEREOF
 September 27, 2000
 Q61014
 202-293-7060

SN: 09/670,568
 Sheet 12 of 15

FIG. 12

mp51	1	ATGTCGCAGAGCACCCAGACAAGCGAGTTCCTCAGCCCAGAGGTCTTCCAGCATATCTGG	60
p51B	1	ATGTCGCAGAGCACACAGACAAATGAATTCCTCAGTCCAGAGGTTTCCAGCATATCTGG	60

mp51	61	GATTTTCTGGAACAGCCTATATGCTCAGTACAGCCCATCGAGTTGAACTTTGTGGATGAA	120
p51B	61	GATTTTCTGGAACAGCCTATATGCTCAGTTCAGCCCATTGACTTGAACCTTTGTGGATGAA	120

mp51	121	CCTTCCGAAAATGGTGCAACAAACAAGATTGAGATTAGCATGGATTGTATCCGCATGCAA	180
p51B	121	CCATCAGAAGATGGTGCGACAAACAAGATTGAGATTAGCATGGACTGTATCCGCATGCCAG	180
		** ** *	
mp51	181	GACTCAGACCTCAGTGACCCCATGTGGCCACAGTACACGAACCTGGGGCTCCTGAACAGC	240
p51B	181	GACTCGGACCTGAGTGACCCCATGTGGCCACAGTACACGAACCTGGGGCTCCTGAACAGC	240

mp51	241	ATGGACCAGCAGATTGAGAACGGCTCCTCGTCCACCAGCCCCTACAACACAGACCACGCA	300
p51B	241	ATGGACCAGCAGATTGAGAACGGCTCCTCGTCCACCAGTCCCTATAACACAGACCACGCG	300

mp51	301	CAGAATAGCGTGACGGCGCCCTCGCCCTATGCACAGCCCAGCTCCACCTTTGATGCCCTC	360
p51B	301	CAGAACAGCGTGACGGCGCCCTCGCCCTACGCACAGCCCAGCTCCACCTTCGATGCTCTC	360

mp51	361	TCTCCATCCCTGCCATTCCCTCCAACACAGATTACCCGGGCCCCACACAGCTTCGATGTG	420
p51B	361	TCTCCATCACC CGCCATCCCTCCAACACCGACTACCCAGGCCCGCACAGTTTCGACGTG	420

mp51	421	TCCTTCCAGCAGTCAAGCACTGCCAAGTCAGCCACCTGGACGTATTCACCCGAACCTGAAG	480
p51B	421	TCCTTCCAGCAGTCAAGCACTGCCAAGTCAGCCACCTGGACGTATTCACCTGAACCTGAAG	480

mp51	481	AAGCTGTACTGCCAGATTGCGAAGACATGCCCCATCCAGATCAAGGTGATGACCCACCC	540
p51B	481	AAACTCTACTGCCAATTGCAAAGACATGCCCCATCCAGATCAAGGTGATGACCCACCT	540
		** ** *	
mp51	541	CCACAGGGCGCTGTTATCCGTGCCATGCCTGTCTACAAGAAAGCTGAGCATGTCACCGAG	600
p51B	541	CCTCAGGGAGCTGTTATCCGCGCCATGCCTGTCTACAAAAAAGCTGAGCACGTCACGGAG	600
		** *****	
mp51	601	GTTGTGAAACGATGCCCTAACCATGAGCTGAGCCGTGAGTTCAATGAGGGACAGATTGCC	660
p51B	601	GTGGTGAAGCGGTGCCCAACCATGAGCTGAGCCGTGAATTCAACGAGGGACAGATTGCC	660
		** *****	
mp51	661	CCTCCCAGTCATCTGATTGAGTAGAAGGGGAACAGCCATGCCCAGTATGTAGAAGATCCT	720
p51B	661	CCTCCTAGTCATTTGATTGAGTAGAGGGGAACAGCCATGCCCAGTATGTAGAAGATCCC	720

mp51	721	ATCACGGGAAGGCAGAGCGTGCTGGTCCCTTATGAGCCACCACAGGTTGGCACTGAATTC	780
p51B	721	ATCACAGGAAGACAGAGTGCTGGTACCTTATGAGCCACCCAGGTTGGCACTGAATTC	780

APPROVED	O.G. FIG.	
BY	CLASS	SUBCLASS
DRAFTSMAN		

Y. KAWA, et al.
 AN p51 GENES AND GENE
 PRODUCTS THEREOF
 September 27, 2000
 Q61014
 202-293-7060

SN: 09/670,568
 Sheet 13 of 15

FIG. 13

```

mp51 781 ACAACAGTCCTGTACAATTTTCATGTGTAACAGCAGCTGCGTCGGAGGAATGAACAGACGT 840
p51B 781 ACGACAGTCCTGTACAATTTTCATGTGTAACAGCAGTTGTGTTGGAGGGATGAACCGCCGT 840
      ** ***** **

mp51 841 CCAATTTTAAATCATCGTTACTCTGGAACCCAGAGATGGGCAAGTCCTGGGCCGACGGTGC 900
p51B 841 CCAATTTTAAATCATGTTACTCTGGAACCCAGAGATGGGCAAGTCCTGGGCCGACGGTGC 900
      *****

mp51 901 TTTGAGGCCCGGATCTGTGCTTGCCAGGAAGAGACCCGAAGGCAGATGAAGACAGCATC 960
p51B 901 TTTGAGGCCCGGATCTGTGCTTGCCAGGAAGAGACAGGAAGGCAGATGAAGATAGCATC 960
      *****

mp51 961 AGAAAGCAGCAAGTATCGGACAGCGCAAAGAACGGCGATGGTACGAAGCGCCCTTTCCGT 1020
p51B 961 AGAAAGCAGCAAGTTTCGGACAGTACAAAGAACGGTGATGGTACGAAGCGCCCGTTTCGT 1020
      *****

mp51 1021 CAGAATACACACGGAATCCAGATGACTTCCATCAAGAAACGGAGATCCCCAGATGATGAG 1080
p51B 1021 CAGAACACACATGGTATCCAGATGACATCCATCAAGABACGAAGATCCCCAGATGATGAA 1080
      *****

mp51 1081 CTGCTGTACCTACCAAGTGAGAGGTCGTGAGACGTACGAGATGTTGCTGAAGATCAAAGAG 1140
p51B 1081 CTGTTTACTTACCAAGTGAGGGGCCGTGAGACTTATGAAATGCTGTTGAAGATCAAAGAG 1140
      *** *

mp51 1141 TCCTGGAGCTCATGCAGTACCTCCCTCAGCACACGATCGAAACGTACAGGCAGCAGCAG 1200
p51B 1141 TCCCTGGAACCTCATGCAGTACCTTCCTCAGCACACAATTGAAACGTACAGGCAACAGCAA 1200
      ** *****

mp51 1201 CAGCAGCAGCACCAGCACCTACTTCAGAAACAGACCTCGATGCAGTCTCAGTCTTCATAT 1260
p51B 1201 CAGCAGCAGCACCAGCACTTACTTCAGAAACAGACCTCAATACAGTCTCCATCTTCATAT 1260
      *****

mp51 1261 GGCAACAGTTCCTCCCTCTGAACAAAATGAACAGCATGAACAAGCTGCCTTCCGTGAGC 1320
p51B 1261 GGTAACAGTTCCTCCCTCTGAACAAAATGAACAGCATGAACAAGCTGCCTTCTGTGAGC 1320
      ** *****

mp51 1321 CAGCTTATCAACCCACAGCAGCGCAATGCCCTCACTCCCACCACCATGCCCTGAGGGCATG 1380
p51B 1321 CAGCTTATCAACCCCTCAGCAGCGCAACGCCCTCACTCCTACAACCATTCCTGATGGCATG 1380
      *****

mp51 1381 GGAGCCAACATTCCCTATGATGGGCACTCACATGCCAATGGCTGGAGACATGAATGGACTC 1440
p51B 1381 GGAGCCAACATTCCCATGATGGGCACCCACATGCCAATGGCTGGAGACATGAATGGACTC 1440
      *****

mp51 1441 AGCCCTACCCAAGCTCTCCCTCCCTCACTCTCCATGCCCTCCACCTCCCACTGCACCCCA 1500
p51B 1441 AGCCCCACCCAGGCACTCCCTCCCGCACTCTCCATGCCATCCACCTCCCACTGCACCCC 1500
      *****

mp51 1501 CCACCGCCCTACCCACAGACTGCAGCATTGTGAGTTTCTTAGCAAGGTTGGGCTGCTCA 1560
p51B 1501 CCACCTCCGTATCCACAGATTGCAGCATTGTGAGTTTCTTAGCGAGGTTGGGCTGTTCA 1560
      *****

```

APPROVED	O.G: FIG.	
BY	CLASS	SUBCLASS
DRAFTSMAN		

Y. KAWA. et al.
 IN p51 GENES AND GENE
 PRODUCTS THEREOF
 September 27, 2000
 Q61014
 202-293-7060

SN: 09/670,568
 Sheet 14 of 15

FIG. 14

```

mp51 1561 TCATGCCTGGACTATTTACGACCCAGGGGCTGACCACCATCTATCAGATTGAGCATTAC 1620
p51B 1561 TCATGTCTGGACTATTTACGACCCAGGGGCTGACCACCATCTATCAGATTGAGCATTAC 1620
*****

mp51 1621 TCCATGGATGATTTGGCAAGTCTGAAGATCCCTGAACAGTTCCGACATGCCATCTGGAAG 1680
p51B 1621 TCCATGGATGATCTGGCAAGTCTGAAAATCCCTGAGCAATTCGACATGCGATCTGGAAG 1680
*****

mp51 1681 GGCATCCTGGACCACAGGCAGCTGCACGACTTCTCCTCACCTCCTCATCTCCTGAGGACC 1740
p51B 1681 GGCATCCTGGACCACCGGCAGCTCCACGAATTCTCCTCCCCTTCTCATCTCCTGCGGACC 1740
*****

mp51 1741 CCAAGTGGTGCCTCTACCGTCAGTGTGGGCTCCAGTGAGACCCGTGGTGAACGTGTGATC 1800
p51B 1741 CCAAGCAGTGCCTCTACAGTCAGTGTGGGCTCCAGTGAGACCCGGGGTGAGCGTGTATT 1800
*****

mp51 1801 GATGCCGTGCGCTTTACCTCCGCCAGACCATCTCTTTTCCACCCCGTGACGAGTGGAAT 1860
p51B 1801 GATGCTGTGCGATTACCTCCGCCAGACCATCTCTTTCCACCCCGAGATGAGTGGAAT 1860
*****

mp51 1861 GATTTCAACTTTGACATGGATTCTCGTCGCAACAAGCAGCAGCGTATCAAAGAGGAAGGA 1920
p51B 1861 GACTTCAACTTTGACATGGATGCTCGCCGCAATAAGCAACAGCGCATCAAAGAGGAGGGG 1920
**

mp51 1921 GAA 1923
p51B 1921 GAG 1923
**
  
```

APPROVED	O.G. FIG.	
BY	CLASS	SUBCLASS
DRAFTSMAN		

KAWA, et al.
 IN p51 GENES AND GENE
 PRODUCTS THEREOF
 September 27, 2000
 Q61014
 202-293-7060

SN: 09/670,568
 Sheet 15 of 15

FIG. 15

mp51BnAA	M8QSTQTSEFLSPEVVFQHIWDFLEQPICSVQPIELNFVDEPSENGATNKIEISMDCIRMQ	60
p51B aa	MSQSTQTNEFLSPEVVFQHIWDFLEQPICSVQPIDLNFVDEPSEDGATNKIEISMDCIRMQ	60

mp51BnAA	DSDLSDPMWPQYTNLGLLNSMDQQIQNGSSSTSPYNTDHAQNSVTAPSPYAQPSSTFDAL	120
p51B aa	DSDLSDPMWPQYTNLGLLNSMDQQIQNGSSSTSPYNTDHAQNSVTAPSPYAQPSSTFDAL	120

mp51BnAA	SPSPAIPSN TDYPGPHSFDVSFQQSSTAKSATWTYSTELKKLYCQIAKTCPIQIKVMTTP	180
p51B aa	SPSPAIPSN TDYPGPHSFDVSFQQSSTAKSATWTYSTELKKLYCQIAKTCPIQIKVMTTP	180

mp51BnAA	PQGAVIRAMPVYKKAESHVTEVVKRCPNBELSREFNEGQIAPPSELIRVEGNSHAQYVEDP	240
p51B aa	PQGAVIRAMPVYKKAESHVTEVVKRCPNBELSREFNEGQIAPPSELIRVEGNSHAQYVEDP	240

mp51BnAA	ITGRQSVLVPIEPPQVGTEFTTVLYNFMCNSSCVGGMNRRPILIIVTLETRDGQVLGRRC	300
p51B aa	ITGRQSVLVPIEPPQVGTEFTTVLYNFMCNSSCVGGMNRRPILIIVTLETRDGQVLGRRC	300

mp51BnAA	FEARICACPGDRKADEDSIRKQQVSDSAKNGDGTKRPFQNTHEGIQMTSIRKRRSPDDE	360
p51B aa	FEARICACPGDRKADEDSIRKQQVSDSTKNGDGTKRPFQNTHEGIQMTSIRKRRSPDDE	360

mp51BnAA	LLYLPVRGRETYEMLLKIKESLELMQYLPQHTIETIRQQQQQQHQHLLQKQTSIQSPSSY	420
p51B aa	LLYLPVRGRETYEMLLKIKESLELMQYLPQHTIETIRQQQQQQHQHLLQKQTSIQSPSSY	420

mp51BnAA	GNSSPPLNKMNSMNKLPSVSQILNPQORNALTPTTMEPGMGANIPMMGTHMPMAGDMNGL	480
p51B aa	GNSSPPLNKMNSMNKLPSVSQILNPQORNALTPTTIPDGMGANIPMMGTHMPMAGDMNGL	480

mp51BnAA	SPTQALPPPLSNPSTSHCTPPPPYPTDCSIVSFLARLGCSSCLDYFTTQGLTTIYQIEHY	540
p51B aa	SPTQALPPPLSNPSTSHCTPPPPYPTDCSIVSFLARLGCSSCLDYFTTQGLTTIYQIEHY	540

mp51BnAA	SMDDLASLKIPEQFRHAIWKGILDERQLHDFSSPPHLLRTPSGASTVSVGSSETRGERVI	600
p51B aa	SMDDLASLKIPEQFRHAIWKGILDERQLHEFSSPSHLLRTPSSASTVSVGSSETRGERVI	600

mp51BnAA	DAVRFTLRQTISFFPRDEWNTDFNEDMDSRRNKQQRKEEGE	641
p51B aa	DAVRFTLRQTISFFPRDEWNTDFNEDMDARRNKQQRKEEGE	641

**This Page is Inserted by IFW Indexing and Scanning
Operations and is not part of the Official Record**

BEST AVAILABLE IMAGES

Defective images within this document are accurate representations of the original documents submitted by the applicant.

Defects in the images include but are not limited to the items checked:

☐ **BLACK BORDERS**

☐ **IMAGE CUT OFF AT TOP, BOTTOM OR SIDES**

☐ **FADED TEXT OR DRAWING**

☒ **BLURRED OR ILLEGIBLE TEXT OR DRAWING**

☐ **SKEWED/SLANTED IMAGES**

☐ **COLOR OR BLACK AND WHITE PHOTOGRAPHS**

☐ **GRAY SCALE DOCUMENTS**

☐ **LINES OR MARKS ON ORIGINAL DOCUMENT**

☐ **REFERENCE(S) OR EXHIBIT(S) SUBMITTED ARE POOR QUALITY**

☐ **OTHER: _____**

IMAGES ARE BEST AVAILABLE COPY.

As rescanning these documents will not correct the image problems checked, please do not report these problems to the IFW Image Problem Mailbox.